



COMHANHOLLAND
ALUMINIUM

FABRIC FRAMES
FROM STOCK
&
CUSTOM MADE



SEG fabric frames

SILICONE EDGE GRAPHICS FRAMES
FOR PRINTED FABRIC



T-Flex Fabric frames Specifications

Sign system:	T-Flex frameless fabric frames
Features:	Profiles & Parts for silicone edge graphics on a wall, freestanding or hanging
Application	Changeable, fabric with stitched on silicone keder
Use:	For indoor illuminated or non-illuminated
Light source:	Various LED options
Designed for:	Single and double-sided, cube and door applications
Profile:	6100 mm, EN AW 6060 T6, mill & anodised
Parts:	Feet, corner connectors, round corners, supports, support profile and quick connectors
Customisation:	Easy-to-assemble DIY kit on request



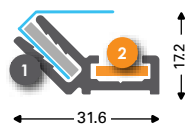
Non-illuminated single & double sided

T-Flex 09 Retro One-sided		<p>1 131063 T-Flex 9/1 Adapterprofile straight anod L 6100</p>
T-Flex 17 Straight One-sided		<p>1 131002 (131004* 131003** 131000****) T-Flex 17/1 Straight mill</p> <p>2 131078 Corner connector steel 17, 35 & 60</p> <p>2 137152 Corner connector steel 100 mm</p> <p>3 131079 Adjustable wall mounting hook T-17</p>
T-Flex 17 Mini One-sided		<p>1 131005 (131007* 131001**131006*** 131080****131081*****) T-Flex 17/1 Mini mill</p> <p>2 137158 Corner connector M steel hexagon</p> <p>2 137154 Corner connector L steel hexagon</p> <p>2 137152 Straight connector 100 mm</p>
T-Flex 17/1 with reinforcement detail One-sided		<p>1 139130 T-Flex 17/1 with reinforcement detail anod</p> <p>2 137158 Corner connector M steel hexagon</p> <p>2 137154 Corner connector L steel hexagon</p> <p>2 137152 Straight connector 100 mm</p>

* Anodised profile ** RAL 9003 profile *** RAL 9005 profile **** Drilled anodised ***** Drilled black

T-Flex 17/45°

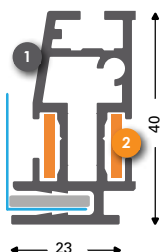
One-sided



- 1 131133* (131134** 131135***)
T-Flex 17/45° anod
- 2 137158
Corner connector M steel hexagon
- 2 137154
Corner connector L steel hexagon
- 2 137152
Straight connector 100 mm

T-Flex 23/1

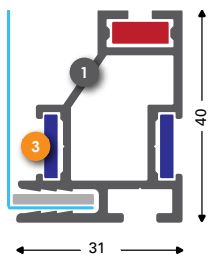
One-sided



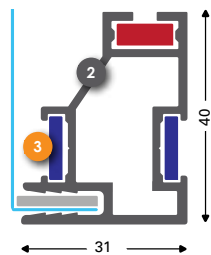
- 1 131010 (131012*)
T-Flex 23/1 mill
- 2 137158
Corner connector M steel hexagon
- 2 137154
Corner connector L steel hexagon
- 2 137152
Straight connector 100 mm
- 131025 (131026***)
T-Flex ABS corner grey

T-Flex 30/1

One-sided



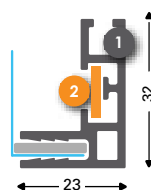
- 1 131310 (131311*)
T-Flex 30/1 Basic mill
- 3 137158
Corner connector M steel hexagon
- 3 137152
Straight connector 100 mm



- 2 131314 (131315*)
T-Flex 30/1 Basic closed mill
- 3 137154
Corner connector L steel hexagon

T-Flex 32/1

One-sided

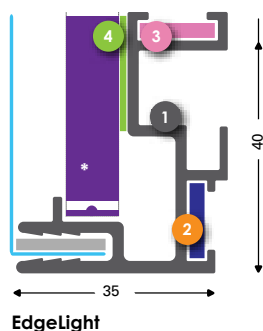


- 1 131057 (131058*)
T-Flex 32/1 LP mill

- 2 137158
Corner connector M steel hexagon
- 2 137154
Corner connector L steel hexagon
- 2 137152
Straight connector 100 mm

T-Flex 35/1

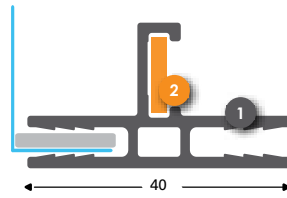
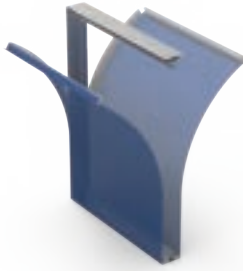
One-sided



- 1 131045 (131047* 131046***)
T-Flex 35/1 LED-frame mill
- 2 137158
Corner connector M steel hexagon
- 2 137154
Corner connector L steel hexagon
- 3 131078
Corner connector steel 17, 35 & 60
- 4 3MTape

T-Flex 40/2

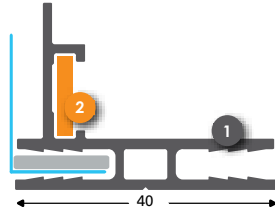
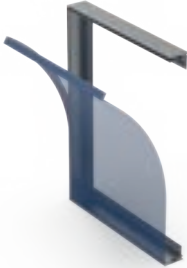
One-sided



- 1 **131560 (131562*)**
T-Flex 40/2 mill
- 2 **137158**
Corner connector M steel hexagon
- 2 **137154**
Corner connector L steel hexagon
- 2 **137152**
Straight connector 100 mm

T-Flex 40/2 LED

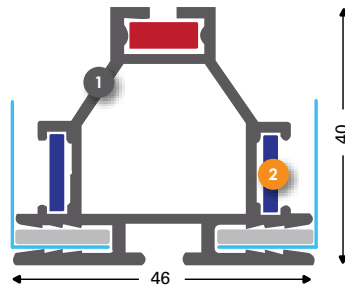
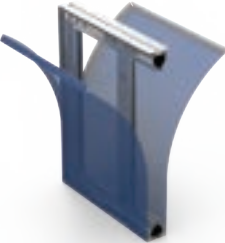
One-sided



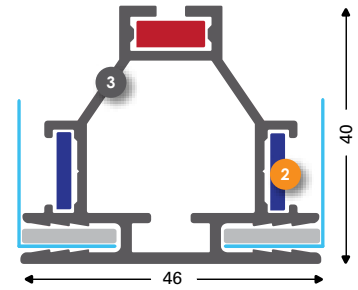
- 1 **131564 (131566*)**
T-Flex 40/2 LED mill
- 2 **137158**
Corner connector M steel hexagon
- 2 **137154**
Corner connector L steel hexagon
- 2 **137152**
Straight connector 100 mm

T-Flex 46/2 basic

Double-sided



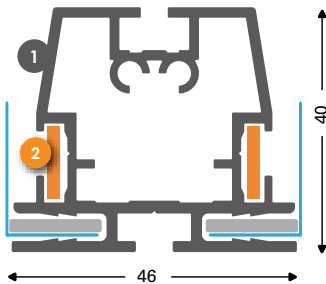
- 1 **131114 (131116*)**
T-Flex 46/2 Basic open mill
- 2 **137158**
Corner connector M steel hexagon
- 2 **137154**
Corner connector L steel hexagon



- 3 **131115 (131117*)**
T-Flex 46/2 Basic closed mill
- 2 **137152**
Straight connector 100 mm

T-Flex 46/2

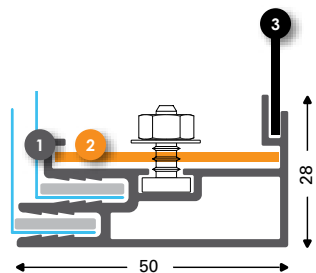
Double-sided



- 1 **131014 (131016* 131015****)**
T-Flex 46/2 mill
- 2 **137158**
Corner connector M steel hexagon
- 2 **137154**
Corner connector L steel hexagon
- 2 **137152**
Straight connector 100 mm

T-Flex 50/1

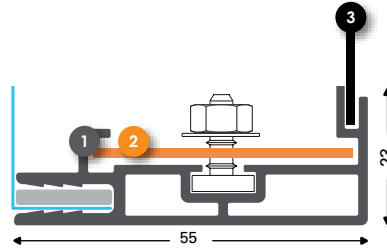
One-sided



- 1 **131054 (131055*)**
T-Flex 50/1 LightBox DT mill
- 2 **130708**
Corner connector FF
- 3 **ACP 2 mm Backpanel Matt white**
Dimension: H-42 mm W-42 mm
- 131059**
Backpanel support 50/55 - 40 mm

T-Flex 55/1

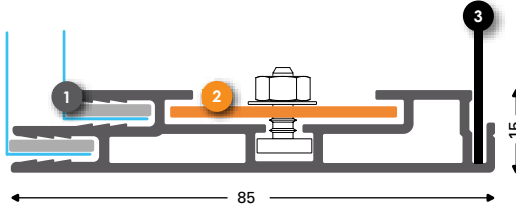
One-sided



- 1 **131050 (131052*)**
T-Flex 55/1 LightBox mill
 - 2 **130708**
Corner connector FF
 - 3 **ACP 2 mm Backpanel Matt white**
Dimension: H-32 mm W-32 mm
- 131059**
Backpanel support 50/55 - 40 mm

T-Flex 85/1

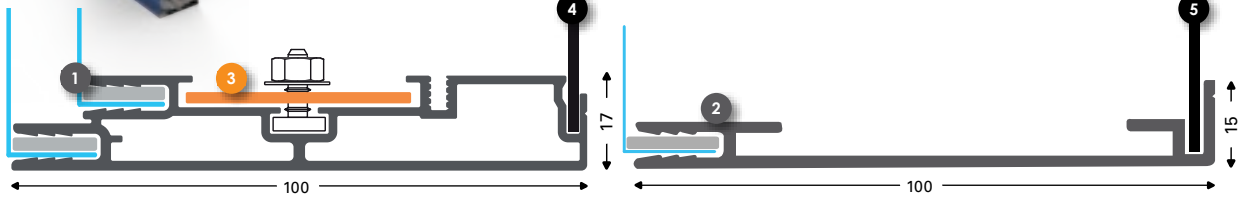
One-sided



- 1 **131085 (131087* 131086** 139018****)**
T-Flex 85/1 LightBox mill
 - 2 **130708**
Corner connector FF
 - 3 **ACP 2 mm Backpanel Matt white**
Dimension: H-5 mm W-5 mm
- 139019**
T-Flex 85/1 LightBox (3 mm) anod
- 131089**
Backpanel support 75/85/150 - 40 mm

T-Flex 100/1

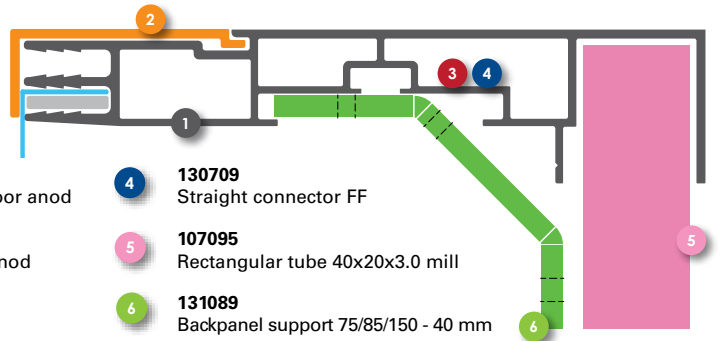
One-sided



- 1 **131104 (131106* 131105** 131107*** 131101****)**
T-Flex 100/1 LightBox mill
 - 2 **131102**
T-Flex 100/1 Rolling profileT4 mill
 - 3 **130708**
Corner connector FF
 - 4 **ACP 2 mm Backpanel Matt white**
Dimension: H-15 mm W-15 mm
 - 5 **ACP 2 mm Backpanel Matt white**
Dimension: H-5 mm W-5 mm
- 131088**
Backpanel support 100 - 40 mm

T-Flex 120/1 DT

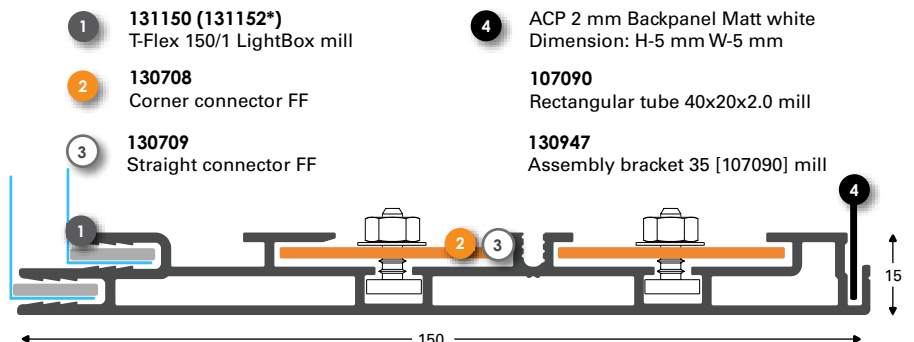
One-sided



- 1 **139293**
T-Flex 120/1 DT Outdoor anod
- 2 **139296**
Retainer for 139293 anod
- 3 **130708**
Corner connector FF
- 4 **130709**
Straight connector FF
- 5 **107095**
Rectangular tube 40x20x3.0 mill
- 6 **131089**
Backpanel support 75/85/150 - 40 mm

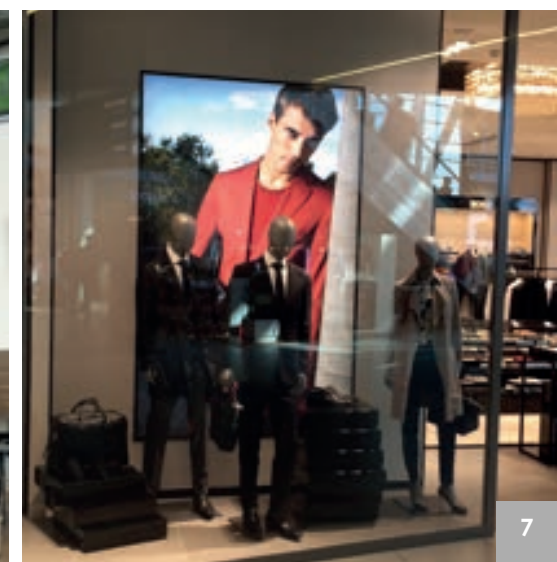
T-Flex 150/1

One-sided



- 1 **131150 (131152*)**
T-Flex 150/1 LightBox mill
 - 2 **130708**
Corner connector FF
 - 3 **130709**
Straight connector FF
 - 4 **ACP 2 mm Backpanel Matt white**
Dimension: H-5 mm W-5 mm
 - 5 **107090**
Rectangular tube 40x20x2.0 mill
- 130947**
Assembly bracket 35 [107090] mill



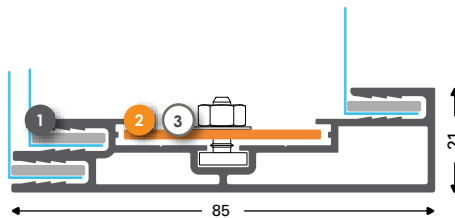


Window system



T-Flex 85/2 WG

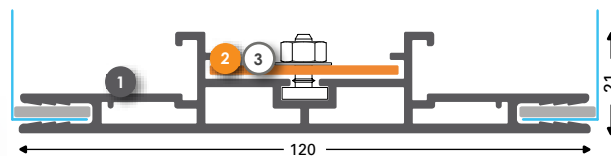
One-sided



- 1 131082 (131083*)
T-Flex 85/2 WG mill
- 2 130708
Corner connector FF
- 3 130709
Straight connector FF

T-Flex 120/2

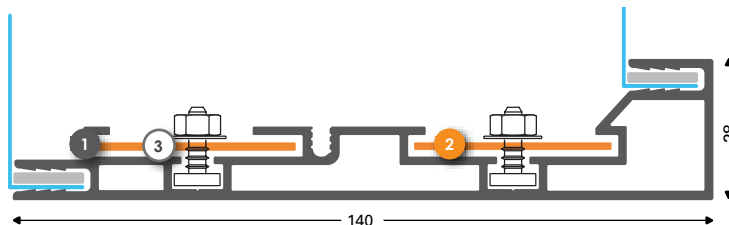
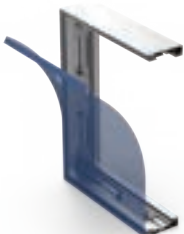
One-sided



- 1 131142 (131143*)
T-Flex 120/2 LightBox anod
- 2 130708
Corner connector FF
- 3 122054
Steel support corner 78x78 screwless
- 130889
Spacer-reinforcement 40x36 RAL9016
- 131098
Support bracket 25 mm with holes
(+ 2 nuts & bolts)

T-Flex 140/2 WG

One-sided

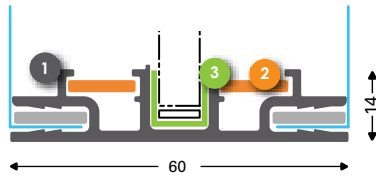
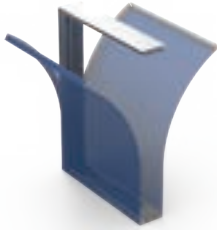


- 1 131130 (131132*)
T-Flex 140/2 WG mill
- 2 130708
Corner connector FF
- 3 130709
Straight connector FF

See page 18-23 for parts and accessories

T-Flex 60/2

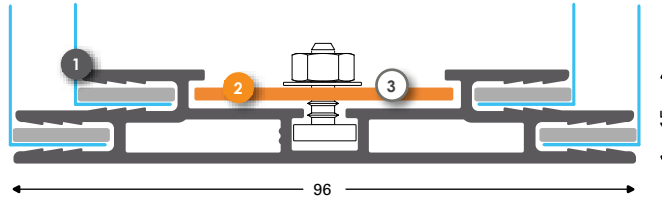
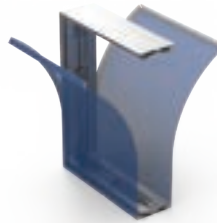
Double-sided



- 1 **131075 (131077*)**
T-Flex 60/2 EdgeLight mill
- 2 **131078**
Corner connector steel 17, 35 & 60

T-Flex 96/2

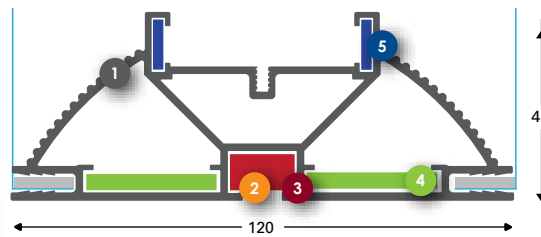
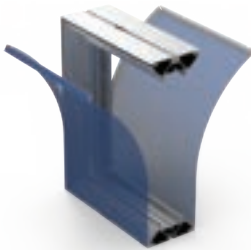
Double-sided



- 1 **131090 (131092*)**
T-Flex 96/2 LightBox mill
- 2 **130708**
Corner connector FF
- 3 **130709**
Straight connector FF

SpeeTex 120/2

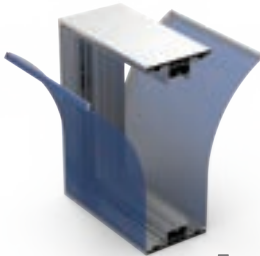
Double-sided



- 1 **131120 (131122*)**
SpeeTex 120/2 mill
- 2 **131165**
Click-Corner connector external
- 3 **131124**
SpeeTex Corner connector 100 hexagon
- 4 **131126**
SpeeTex Corner connector 78x78 for 120
- 5 **137154**
Corner connector L steel hexagon

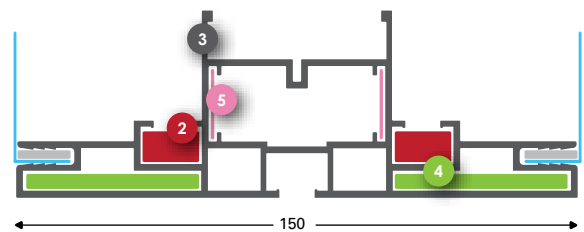
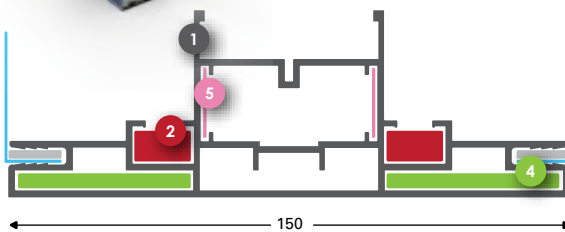
SpeeTex 150/2

Double-sided



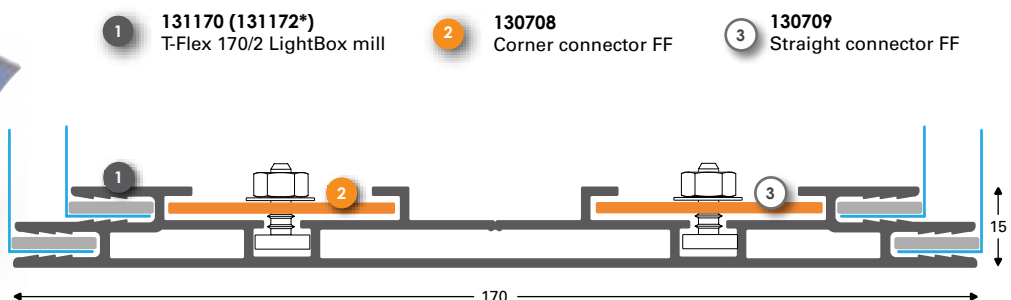
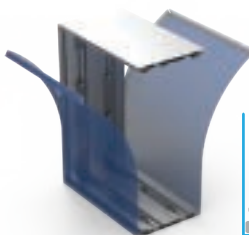
- 1 **131474 (131476*)**
Speetex 150/2 closed mill
- 2 **131479**
Speetex Corner connector 100 mm hexagon internal (125/150)

- 3 **131470 (131472*)**
Speetex 150/2 open mill
- 4 **131478**
Corner connector 78 for Speetex 150
- 5 **131164**
Support-Corner connector steel 150/160

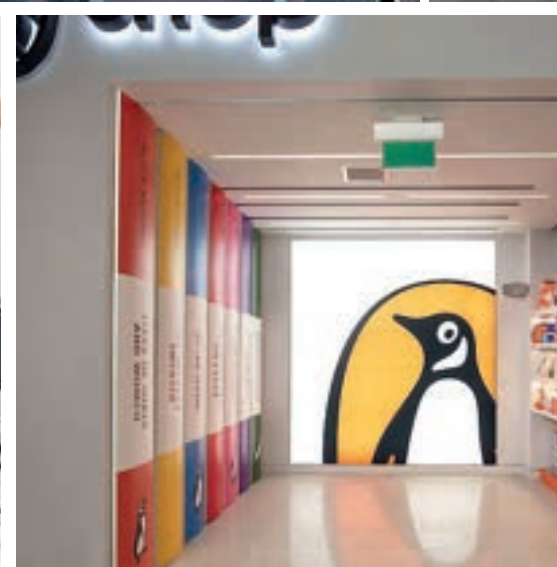


T-Flex 170/2

Double-sided

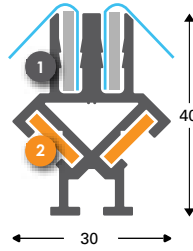
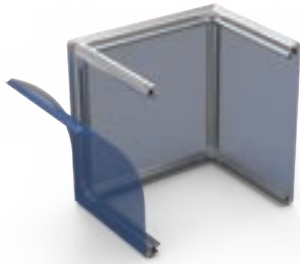


- 1 **131170 (131172*)**
T-Flex 170/2 LightBox mill
- 2 **130708**
Corner connector FF
- 3 **130709**
Straight connector FF



T-Flex Cube

Cube

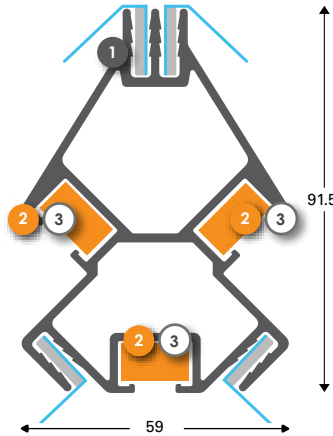
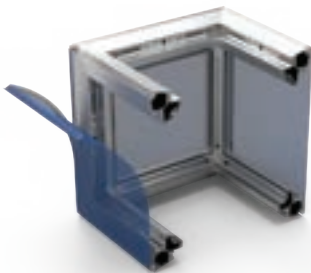


1 **131187**
T-Flex Cube Frame anod

2 **131180**
T-Flex Cube Corner piece

SpeeTex XXL Cube

Cube



1 **131176 (131177*)**
SpeeTex Cube XXL Frameprofile mill

2 **131175**
SpeeTex Cube XXL Corner piece

3 **131178**
Straight connector steel

131175



SpeeTex Cube XXL Corner piece

131179



SpeeTex Cube XXL
Stainless steel hangingpiece

131174



SpeeTex Connector for
reinforcement

131128

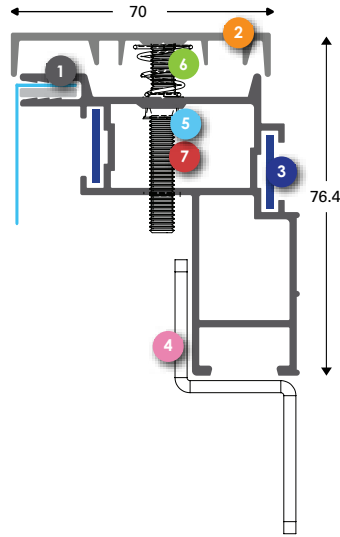


Cube XXL Foot M16 x 150 mm
(adjustable)

* Anodised profile

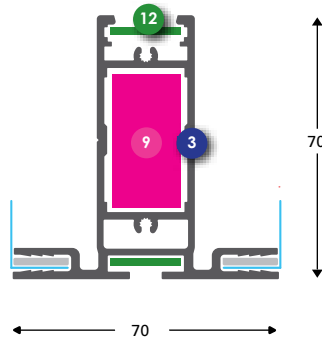
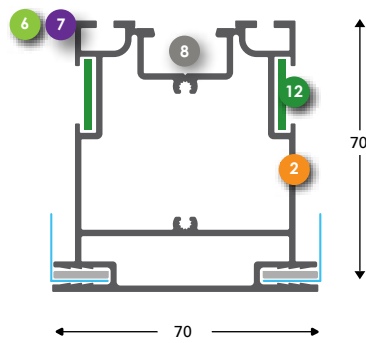
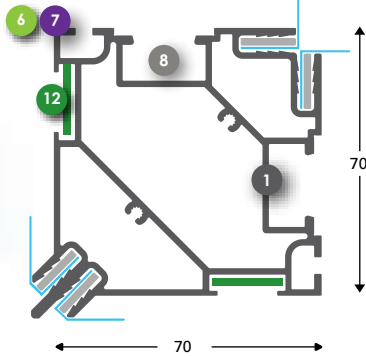


T-Flex 70 Outdoor
One-sided

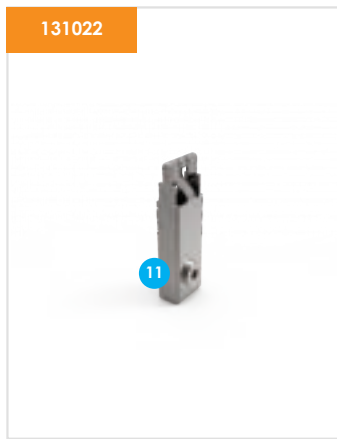
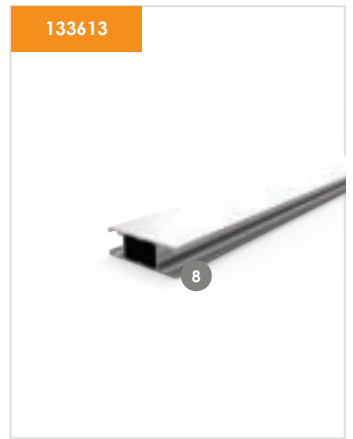
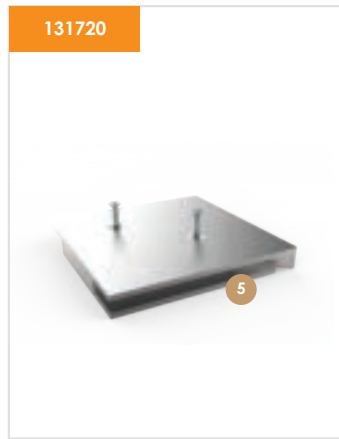
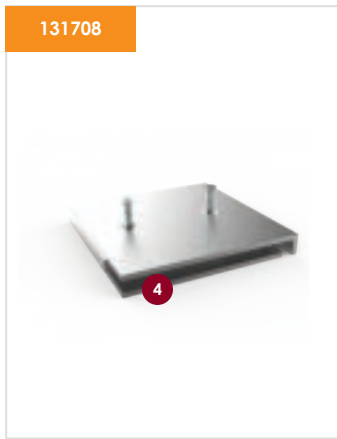


- 1 **131532**
T-Flex 70 Outdoor Basic profile anod
- 2 **131535 (131531* 131533** 131536****)**
T-Flex 70 Outdoor Cover profile anod
- 3 **131538**
T-Flex 70 Outdoor Stainless steel corner connector
- 4 **131539**
T-Flex 70 Outdoor Stainless steel bracket
- 5 **131540**
T-Flex 70 Outdoor stainless steel screw ISO 7380
- 6 **131541**
T-Flex 70 Outdoor Stainless steel cover spring
- 7 **131542**
T-Flex 70 Outdoor Stainless steel blind rivet nut

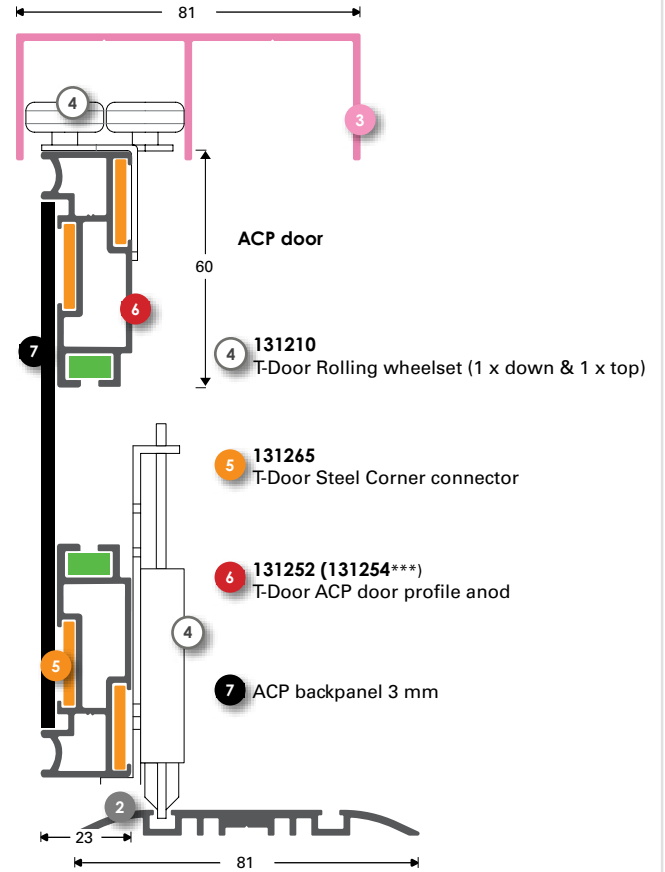
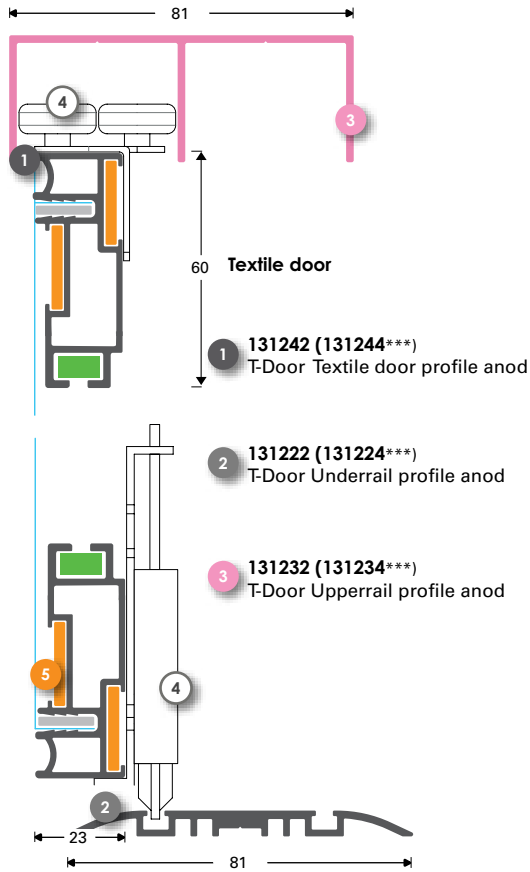
MultiFrame
Double-sided



- 1 **131714 (131716*)**
MultiFrame Cornerprofile anod
- 2 **131702 (131704**)**
MultiFrame Sideprofile anod
- 3 **131726 (131728**)**
MultiFrame T-connecting profile anod
- 4 **131708 (131710**)**
End cap sideprofile [131702] anod
- 5 **131720 (131722**)**
End cap cornerprofile [131714] anod
- 6 **131018**
Reinforcement profile S anod
- 7 **131061**
Reinforcement S RAL 7021 structure
- 8 **133613**
Supporting Profile L anod
- 9 **139758**
T-connector 40 anod (133613)
- 10 **139738**
Drilling template T-connector 139758
- 11 **131022**
Connector straight [131018]
- 12 **131543**
Stainless straight connector [131724/26, 131532]



T-Door
Door frame for stretching textiles



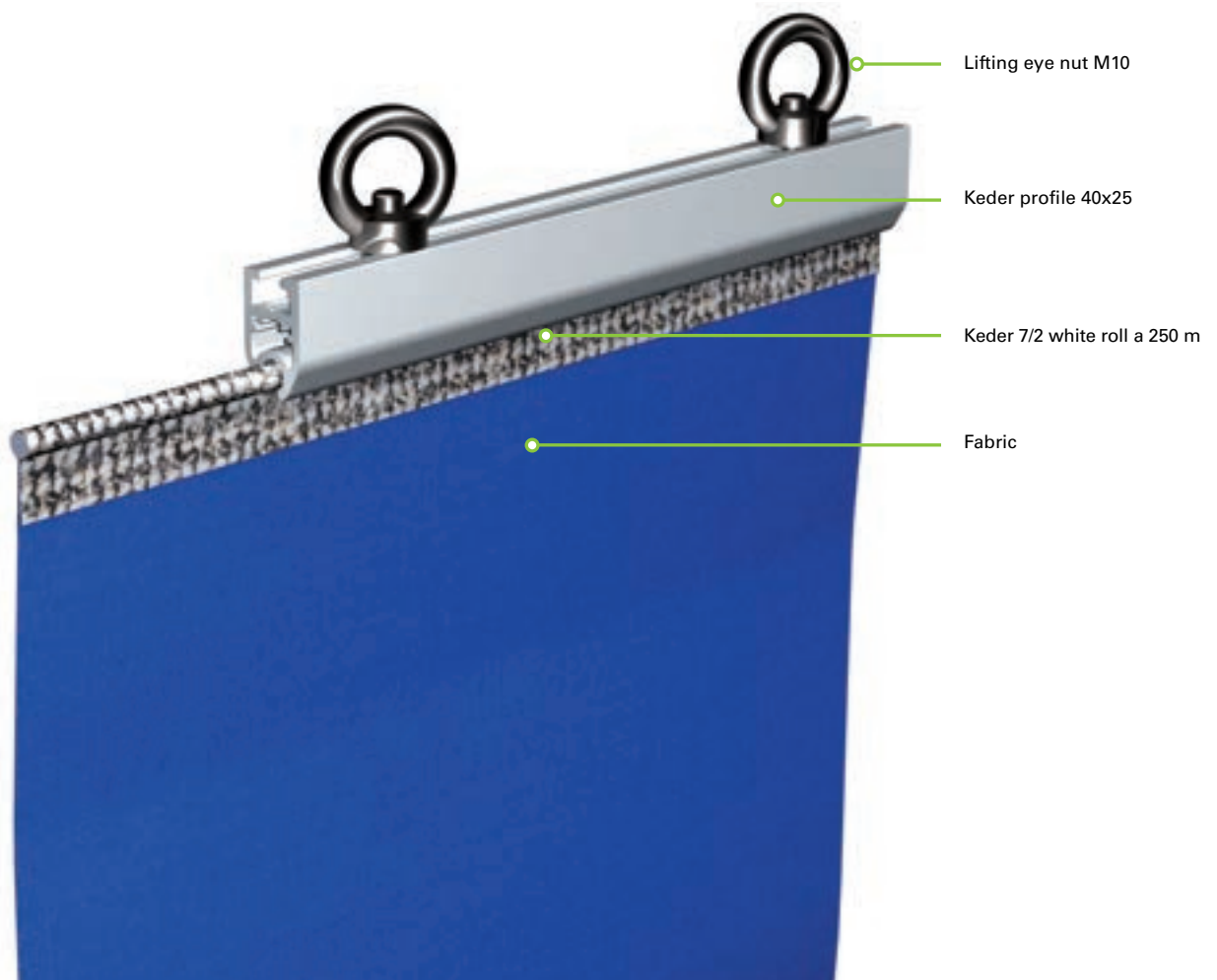
* Anodised profile ** RAL 9003 profile *** RAL 9005 profile

T-Door Fabric and ACP panel sliding door system

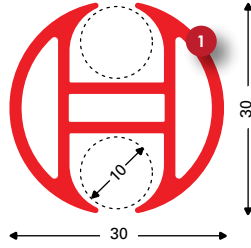


Keder Specifications

Sign system:	Keder profile
Features:	Profiles & Parts for hanging & stretching fabric using keder
Medium:	Textile, PVC cloth & other substrates using keder
Application:	Indoor & outdoor
Variants:	Single and double-sided
Profile:	6100 mm, EN AW 6060 T6, mill finish or anodised
Parts:	End caps & hanger for 138645/47



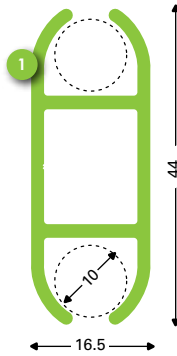
Keder 30/2
Double-sided



- 1 **138660 (138662*)**
Keder profile 30/2 mill
- 138663**
Plastic end cap Keder 30/2 black
- 2 **138654**
Straight connector keder 30-44/2 steel
- 3 **138653**
Hinging connecting part Keder 30-44/2 steel



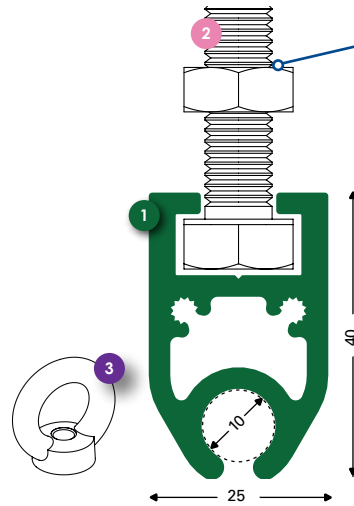
Keder 44/2
Double-sided



- 1 **138639 (138642*)**
Keder profile 44/2 mill
- 138652**
Plastic end cap 138639/42 grey
- 2 **138655**
Hanging part M5 with hook keder 30-44/2
- 138650**
Keder 7/2 white roll a 250 m



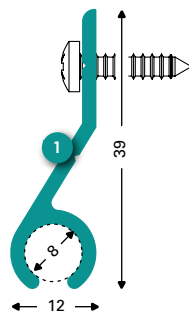
Keder 40/25
One-sided



M10 (138637)
Maximum width across 17 mm /
lifting eye nut M10 (**138640**)

- 1 **138645 (138647*)**
Keder profile 40x25 mill/anod
- 138648***
End cap 138647 anod
- 2 **138641**
Stainless steel A2 Bolts M10 x 20 DIN 933
- 138656**
Straight connector keder 40/25 Steel
- 3 **138640**
Lifting eye nut M10

Keder 39/2
One-sided



- 1 **134110**
Keder profile 39x12 mill

Parts and accessories Tension fabric displays

Connectors and supports + straight

131078



Corner connector
steel 17, 35 & 60

137158



Corner connector
M Steel hexagon

137154



Corner connector
L steel hexagon

137620



Corner connector
60x60x5.0 11 mm mill

131124



SpeeTex Corner connector
100 hexagon

130708



Corner connector FF

131165



Click-corner connector external

131265



T-Door Steel Corner connector

131538



T-Flex 70 Outdoor stainless corner connector

131126



SpeeTex Corner connector
78x78

131166



SpeeTex 160 Corner piece
78x78

131025



Only in combination with 137154

T-Flex ABS corner grey

131026



Alleen in combinatie met 137154

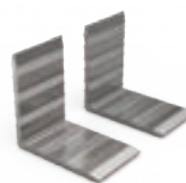
T-Flex ABS corner black

131168



Straight support-connector steel (2)
150/160

131478



Corner connector 78 for Speetex 150

Backpanel supports

131059



Backpanel support 50/55 -
40 mm

131089



Backpanel support 75/85/150 -
40 mm

131088



Backpanel support 100 -
40 mm

Parts and accessories Tension fabric displays

131008



T-Flex 17 Corner solution
45 x 45 mm anod

131009



T-Flex 23 Corner solution
45x45 mm anod

131011



T-Flex 46 Corner solution
45x45 mm anod

137152



Straight connector
100 mm

Assembled corners

130709



Straight connector FF

131178



Straight connector steel

131169



Adjustable click corner connector

131174



SpeeTex Connector for reinforcement

Straight connectors

131030



T-Flex Hinge anod

131031



T-Flex Hinge black anod

131479



Speetex Corner connector 100 mm hexagon internal

131164



Support-Corner connector Steel 150/160

131708



End cap sideprofile [131702] anod

131720



End cap cornerprofile [131714] anod

133613



Supporting Profile L anod

139758



T-connector 40 anod (133613)

139738



Drilling template T-connector 139758

131543



Stainless straight connector [131724/26, 131532]



Parts and accessories Tension fabric displays

Supports

131018



Reinforcement profile S anod

131022



Connector straight [131018]

131023



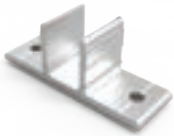
Connector 45 degrees L+R [131018]

131028



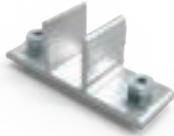
45 dg. reinforcement 750 anod

131097



Support bracket 25 mm with holes

131098



Support bracket 25 mm with holes
(+ 2 nuts & bolts)

131099



Support bracket 25 mm
without holes

131174



SpeeTex Connector
for reinforcement

130889



Spacer - reinforcement 40x36
RAL 9016

131145



Mounting plate for Foot
[131085/131090]

Feet supports

131338



Foot Wall-Basic Aluminium
anod L: 223 mm

131118



Foot B Steel 400 x 60 RAL 9006

131340



Foot S-Basic Aluminium anod
L: 400 mm

131339



Foot M-Basic Aluminium anod
L: 600 mm

131037



Foot L Aluminium anod

131034



Foot G Aluminium anod

131139



SpeeTex Voet 500 120/150/160
anod L: 500 x 80 x 8 mm

131140




SpeeTex Foot 1 (wall) 330
120/150/160 anod

Aluminum, steel & stainless cable

Solutions for quick installation of sign systems

131079



Adjustable wall mounting hook T-17

131319



Hanging hook T-Flex 23/30 basic anod

131539



T-Flex 70 Outdoor stainless steel bracket

131113



Hanging hook T-Flex 46 basic anod

131111




Wall bracket for T-Flex 46 anod

131173



Lifting bold M8 stainless steel + block

130655



Hanging set steel cable hook 3 m T2 stainless steel

130298



Installing hook mill (130297)

138730



Suspensionclip Eco adjustable (34.5 x 10 mm side exit)

138734



Suspensionbus cylindrical (28.5x12 mm side exit)

138732



Suspensionbus conical (40x18 mm side exit)

138751



Adjustable Loop/Cablefixation black 3.0 mm

138752



Adjustable Loop/Cablefixation silver (1.5 mm)

138753




Adjustable Loop/Cablefixation black (1.5 mm)

138750



Adjustable Loop/Cablefixation (3.0 mm) silver

138762



Ceilinggripper with eyelet

138761




Ceilinggripper with adjust. cablebus 1.5 mm

138706




Steelcable with ball 4.5 x 1.5 mm L 1500

138646


















Lifting eye M6 stainless steel

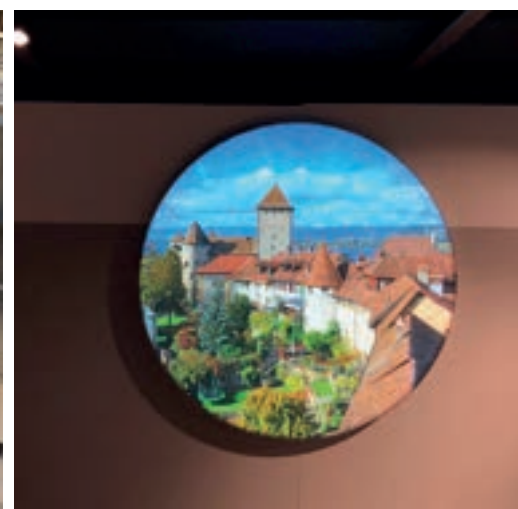
138649



Lifting eye nut M8 stainless steel

Parts and accessories Tension fabric displays

Magnets	<p>139345</p>  <p>Heavy Duty Magnet 32 x 7.0 mm</p>	<p>138710</p>  <p>Heavy Duty Magnet 25 x 8.5 with counterring</p>	<p>138760</p>  <p>Magnetic Anchor 32 mm incl. gripper</p>	<p>131041</p>  <p>Hexagon key 2.5 mm ISO 2936</p>
	<p>131043</p>  <p>Hexagon socketkey 3.0 mm ISO 2936</p>	<p>131024</p>  <p>Torx key for connector [131022/023/027]</p>	<p>131029</p>  <p>T-Flex Hexagon key (M4) 2.0 mm ISO 2936</p>	<p>131017</p>  <p>Rubberroller 131021</p>
	<p>131464</p>  <p>Keder 12x3 PVC White (roll = 200 m)</p>	<p>131466</p>  <p>Keder 14x3 PVC White (roll = 200 m)</p>	<p>131460</p>  <p>Keder 12x3 PVC transparent (roll = 200 m)</p>	<p>131462</p>  <p>Keder 14x3 PVC transparent (roll = 200 m)</p>
	<p>131020</p>  <p>Keder Silicone transparent 14 x 3 mm</p>	<p>131021</p>  <p>Roll-in rubber grey (200 m)</p>	<p>138650</p>  <p>Keder 7/2 white roll a 250 m</p>	



ALWAYS
AVAILABLE
FROM STOCK!

Trade show booth extrusions

1 **131035****
T-Flex Connecting profile anod

5 **131023**
Connector 45 degrees L+R [131018]

2 **131033**
T-Flex connecting part 40 mm anod

131024
Torx key for connector [131022/023/027]

3 **131018***
Reinforcement profile S anod

4 **131022**
Connector straight [131018]

* RAL 7021 ** RAL 7021 structure

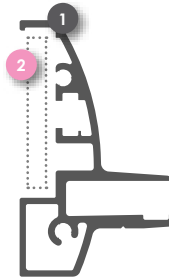


Magnet / shelving

1 **139342**
Magnet shelve carrier anod

2 **139345**
Heavy Duty magnet 32 x 7.0 mm

139344
End cap magnet shelve carrier anod



Comhan SEG fabric frames | Eye-catching, Flexible & Versatile

Comhan's T-Flex SEG-fabric frames provide the perfect means to indoor advertising. Typical areas of application are:

- Shop Windows
- Airports
- Restaurants/Bars
- Museums
- Showrooms
- Trade shows
- Commercial buildings
- Events
- Sliding doors

The T-Flex series is delivered to the visual communication industry through sign makers and companies active in digital printing and advertising.



Call us for more information or make an appointment on +31 (0) 297 513 636

T-Flex Tension fabric displays: "Innovation in Visual communication!"

Comhan delivers the T-Flex textile frame, a versatile aluminum frame illuminated and non-illuminated for printed fabric and banners. Quick, easy and flexible. For indoor applications available in single and double sided frames. The T-Flex series includes more than 30 models, ideal for situations where a fabric will be changed regularly.



Frameless Cube



Bend frame



T-Door

Order your free sign catalogue through our website



NL • Amsterdamseweg 27 • 1422 AC Uithoorn • Holland
T +31 (0)297 513 636 • E comhan@comhan.com

DE • Neue Straße 23 • D 58135 Hagen • Deutschland
T +49 (0)2331 625 1900 • F +49 (0)2331 625 1927 • E comhan@comhan.de